



# VEHICLE DIAGNOSIS UPDATE 5.33.00

**2021-11-16**

**Renaming WOW! software**

**Security Gateway Portal**

**Encryption**

**Diagnosis update**

**New hardware LOOQER available**



# RENAMING SOFTWARE

LOOQIT

---

WOW!



# THE WOW! SOFTWARE GETS A NAME

## WOW! 5.33.00 MILESTONE UPDATE

From version 5.33.00  
the diagnostic software  
is called **LOOQIT**



WOW! LOOQIT 5.33.00

Diagnosis  
Technical data  
Inspection  
Repair Times  
Troubleshooting

POWERSEARCH Example: VIN / Engine code / Manufacturer / Model / ...

Last operations

|                  |   |   |
|------------------|---|---|
| 03.09.2021 10:23 | Mercedes Benz E-Class (213) [16-21]   | → |
| 30.08.2021 16:08 | Mercedes Benz C-Class (205) [19-21] 1.6 - C 200 d / 654.916/118 KW (160 PS) / Diesel / 2019-2021                                    | → |
| 30.08.2021 11:05 | Opel Omega B [94-03] 2.0 - 16V / X20XEV [Siemens - MFI-I - Simtec 56.1 - MFI-s - Simtec 56.5] /100 KW (136 PS) / Petrol / 1994-2000 | → |
| 24.08.2021 10:17 | Volkswagen e-Golf VII [14-21]   | → |
| 19.08.2021 13:17 | Volvo V60 [11-18]   | → |
| 18.08.2021 13:52 | Smart Fortwo (453) [15-21]  | → |
| 10.08.2021 13:30 | Ford Focus ('98) [98-05]  | → |
| 02.08.2021 15:32 | Mercedes Benz E-Class (213) [16-21] 2.0 / 264.915 [MED41] / KW ( PS) / Petrol / 2016-2021 (2021)                                    | → |
| 27.07.2021 15:39 | Audi A1 (GB) [19-21]  | → |
| 26.07.2021 11:53 | Ford Galaxy ('15) [15-21] (2016)  | → |
| 26.07.2021 11:38 | Opel Movano B [10-21]<br>Engine code: LW7/M9T 706   | → |
| 26.07.2021 11:37 | Opel Movano B [10-21] (2017)  | → |
| 26.07.2021 11:34 | Opel Movano B [10-21] 2.3 - Bi-CDTi / LP6/M9T 706 [Siemens - SID 310] /107 KW (145 PS) / Diesel / 2015-2019 (2017)                  | → |
| 21.07.2021 15:06 | Mitsubishi Shogun/Pajero/Montero (V80) [06-18]  | → |
| 21.07.2021 15:06 | Mitsubishi Shogun/Pajero/Montero (V60) [00-07]  | → |
| 15.07.2021 11:01 | Ford Transit Connect ('13) [13-21] 1.5 - TDCI / XWGA [Duratorq - TDCI] /88 KW (120 PS) / Diesel / 2015-2018<br>Engine code: XWGA    | → |
| 15.07.2021 10:42 | Volkswagen e-Golf VII [14-21] 0 litre / EAGA/85 KW (116 PS) / electro drive / 2014-2017   | → |
| 14.07.2021 14:34 | Peugeot 308 II (L) [13-21]  | → |
| 08.07.2021 16:30 | Citroën Jumper/Relay Serie 3 [06-21] 3.0 - HDi / F30DTE (F1CE 3481DM/SOFIM) [Bosch - CP3] /115 KW (156 PS) / Diesel / 2010-2012     | → |

LOOQIT  
WOW!

# SECURITY GATEWAY PORTAL

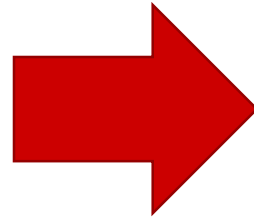


# WOW! SECURITY GATEWAY PORTAL

WOW! 5.33.00 MILESTONE UPDATE

## Security Gateway

- More and more manufacturers are using security gateway systems.
- Each manufacturer has its own access requirements.
- Each user must register and log on to different systems.



## We end the chaos before it begins!

- All available manufacturers are grouped together on the Security Gateway Portal.
- The WOW! takes over the access negotiations with the manufacturers.
- The WOW! customer only has to log on to the SGP (Security Gateway Portal ) to be able to process all available manufacturers.
- One-time authentication on the portal for all manufacturers.

Further information:  
[www.wow-portal.com/securitygateway\\_en](http://www.wow-portal.com/securitygateway_en)

# WOW! SECURITY GATEWAY PORTAL DASHBOARD



WOW! 5.33.00 MILESTONE UPDATE

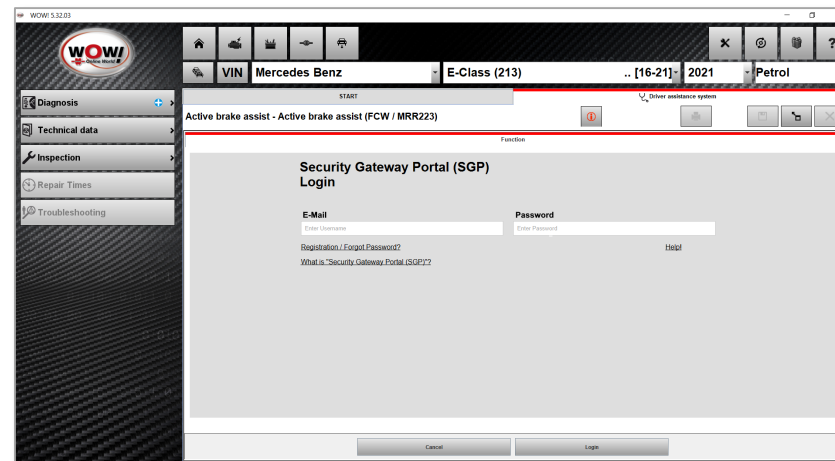
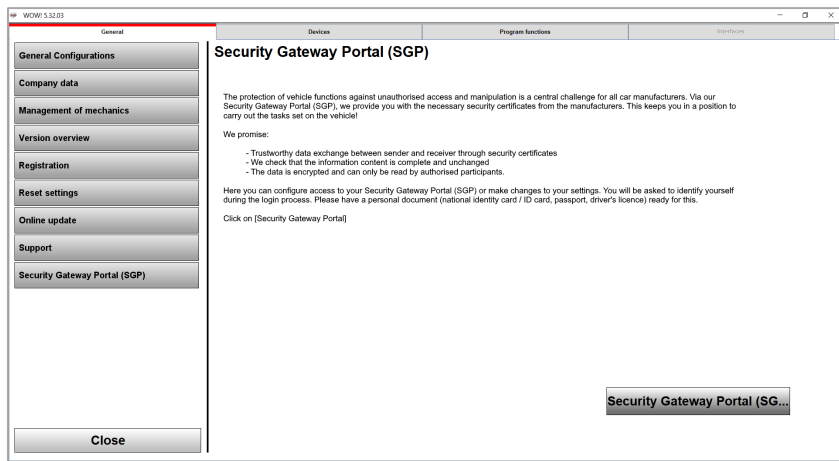
The screenshot displays the user interface of the WOW! Security Gateway Portal. At the top left is the WOW! logo. The top right corner features a language dropdown set to 'English', a 'Logout' button, and the text 'Date: BUILDDATE Version:'. A left sidebar contains navigation icons for Dashboard, Profile, Company, Brands, and Settings. The main content area is titled 'Dashboard' and is divided into several sections: 1. 'Profile' section: Shows a user icon, 'Name: John Doe', and 'Role: Responsible'. A 'Change password' button is located below. 2. 'Brands' section: Displays three brand filters: 'FCA', 'Mercedes', and 'Smart', each with a plus icon. An 'All brands' button is at the bottom left. 3. 'Company' section: Shows a grid icon, 'Name: IWO workshop', 'Responsible: John Doe', and 'Employees: 1'. 'View company' and 'Invite' buttons are at the bottom left. 4. 'Register new company' section: Includes a 'Register' button and the text: 'If you own more than one company, you can register them here.'

Further information:  
[www.wow-portal.com/securitygateway\\_en](http://www.wow-portal.com/securitygateway_en)

# WOW! SECURITY GATEWAY PORTAL

## WOW! 5.33.00 MILESTONE UPDATE

- The administration of the own company and the employees with all access rights takes place in the own account
- Registration only takes place on the SGP (Security Gateway Portal)
- The diagnostic software takes over the forwarding of the SGW enquiries to the respective manufacturers
- The SGP is free of charge and available to all customers with a valid diagnostic license

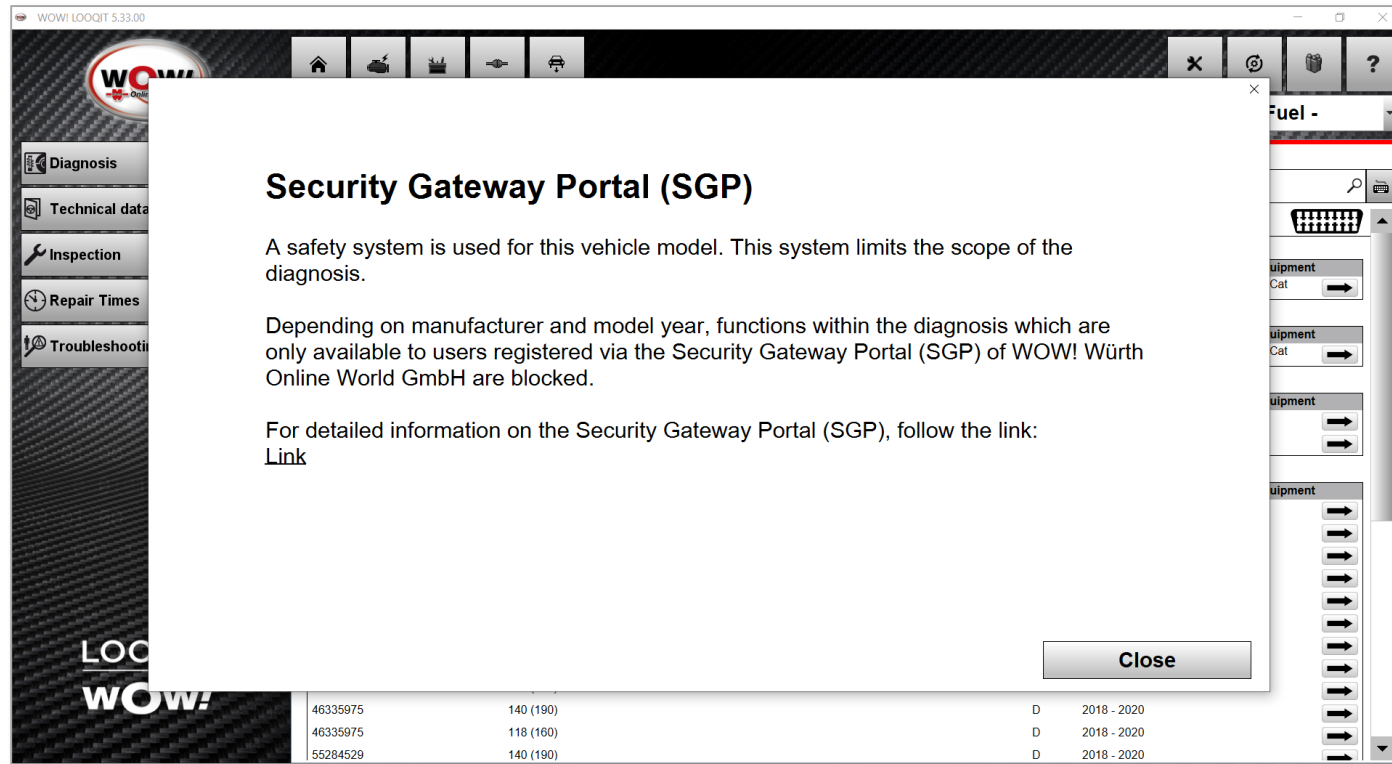


Further information:  
[www.wow-portal.com/securitygateway\\_en](http://www.wow-portal.com/securitygateway_en)

# WOW! SECURITY GATEWAY PORTAL

WOW! 5.33.00 MILESTONE UPDATE

**Improvement:** Supported vehicles with (possible) Security Gateway protection are marked in the program



Further information:  
[www.wow-portal.com/securitygateway\\_en](http://www.wow-portal.com/securitygateway_en)





# WOW! SECURITY GATEWAY PORTAL

## WOW! 5.33.00 MILESTONE UPDATE

### Mercedes CeBAS (Certificate Based Automotive Security)

#### Security Gateway

- With 5.33.00 we enable communication with CeBAS protected vehicles
  - Current models
    - E-Class 213 (model year 2021)
    - E-Class Coupé 238 (model year 2021)
    - S-Class 223
    - More to come

**Mercedes is integrated in WOW! Security Gateway Portal.**

### FCA Fiat Chrysler Automotive – Stage II

#### Security Gateway

- Up to now, we had integrated level I of the FCA SGW diagnosis. Each customer could use his own access data and the acquired certificate to carry out an SGW diagnosis within the WOW! software.
- With the 5.33.00 **we enable communication with FCA SGW protected vehicles also via the Security Gateway Portal.**
- The software recognizes whether the customer uses their own access (username/password) or accesses the WOW! integration via the SGP.

Further information:  
[www.wow-portal.com/securitygateway\\_en](http://www.wow-portal.com/securitygateway_en)



# WHAT ARE THE BENEFITS OF THE WOW! SECURITY GATEWAY PORTAL?

WOW! 5.33.00 MILESTONE UPDATE

**Authentication –**

**Simple and unique  
from the start**

**User interface –**

**Familiar but still new**

**Everyday work –**

**Many manufacturers  
under one roof**

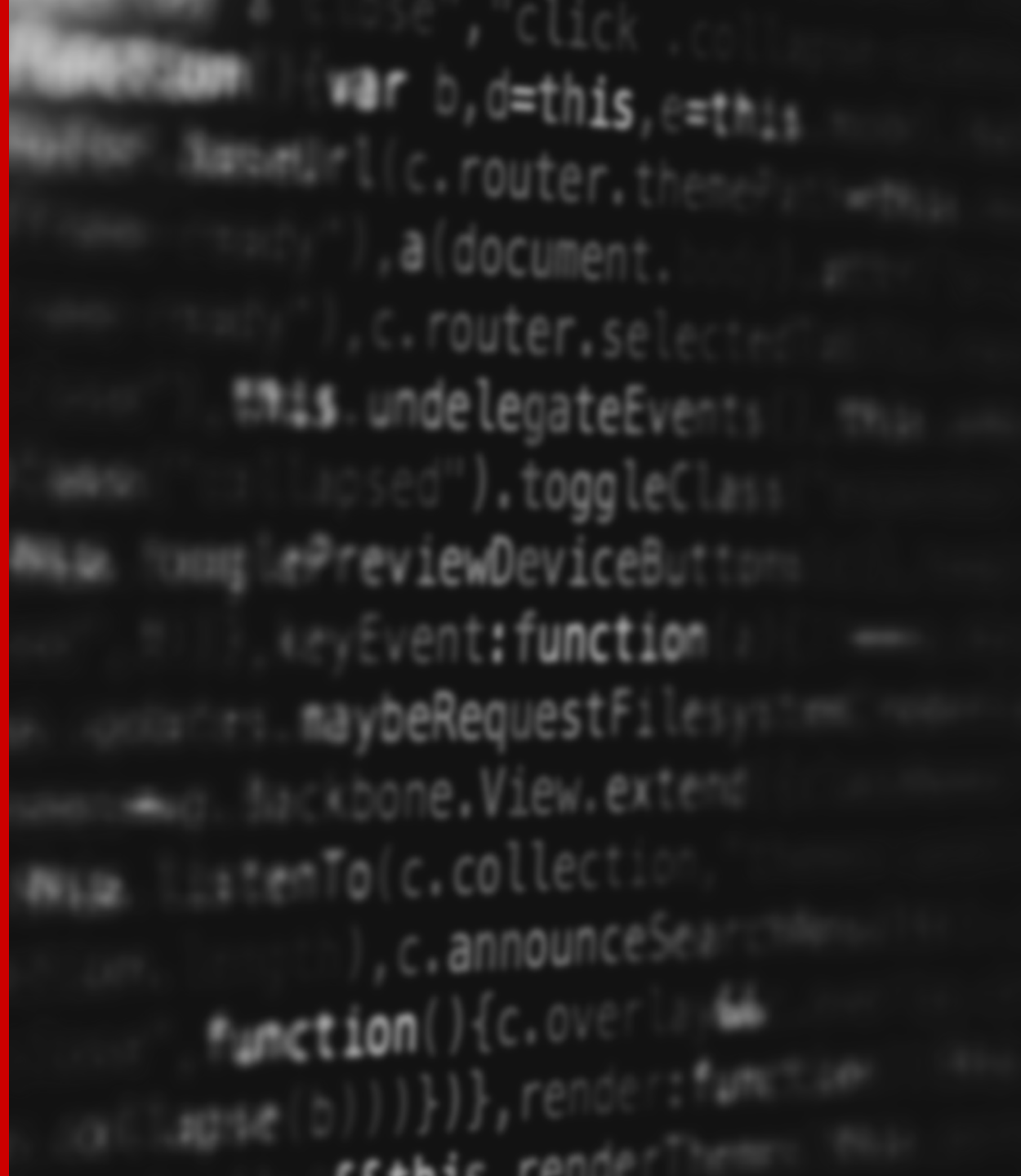
**One-time authentication of only  
one responsible person as well  
as easy addition of further  
users.**

**Familiar and consistent  
user interface with familiar  
terms in the WOW! software.**

**For manufacturer-independent  
and multi-brand working on  
vehicles secured with security  
gateway systems.**

Further information:  
[www.wow-portal.com/securitygateway\\_en](http://www.wow-portal.com/securitygateway_en)

# SOFTWARE ENCRYPTION





# ENCRYPTION OF THE WOW! SOFTWARE

## WOW! 5.33.00 MILESTONE UPDATE

### Full encryption of the WOW! software

- Any diagnostic hardware (VCI) is "just a dumb piece of electronics" without the software that belongs to it.
- The intelligence and knowledge is inside the software.

### A lot has changed in the vehicles since then

- Driving safety systems actively intervene in driving dynamics.
- Safety-relevant systems in the vehicle use SGW technology.
- The use of original OEM data requires new safety concepts in order to protect this data in the best possible way.
- In cooperation with a leading company in the field of software security, we have encrypted our entire software.
- The communication with the diagnostic interface and with the control units is encrypted.

# DIAGNOSIS UPDATE

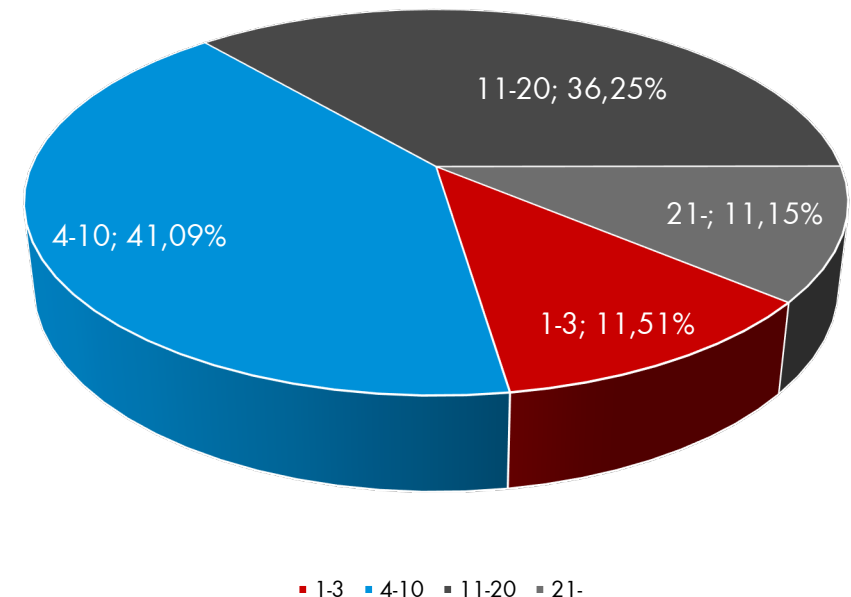


# DIAGNOSIS UPDATE

## WOW! 5.33.00 MILESTONE UPDATE

- As in every update, the "older" vehicles take the main share of the increases! This is a reflection of everyday workshop life!
- The biggest increase compared to the current customer version 5.32.02 is again taken by electric vehicles! We increase the system coverage by 11.5% and increase the coverage of the different variants by 13.8%!

Vehicle age / Update share





# DIAGNOSIS UPDATE

## WOW! 5.33.00 MILESTONE UPDATE

### In the area of ADAS, we added:

- 33 new vehicle model with front camera calibration
  - New manufacturer in this version
    - Cupra (Ateca, Leon)
    - Suzuki (Across, Swace)
- 23 new vehicle model with front radar calibration
- 12 new vehicle model with rear view camera calibration
- 4 models for lane change assist (blind spot detection), Night-Vision and 360° „Bird-view“ camera

# NEW AND REVISED MODELS

## WOW! 5.33.00 MILESTONE UPDATE

### BMW

- New CBS functions Legal vehicle inspection / legal exhaust emission inspection
- Transport mode function for several models

### Citroen / DS

- Berlingo automatic gearbox
- Berlingo 4 camera Calibration
- C5 Aircross system coverage extended
- DS7 system coverage extended

### Ford

- KUGA - New model with updated systems
- Transit [14-] Engine YMFA, YNF6 with full coverage
- Transit/Tourneo Custom [13-] engine YMFS with full coverage

### Jeep

- Compass - 28 systems developed, camera and radar calibration, service reset

### Lexus

- ES, LC, UX, NX model row added
- HV battery - Battery test function
- Motor-generator system

### Mercedes

- CeBAS (Certificate Based Automotive Security) for E-Class MY2021, EQB new model with full coverage, New model EQA - Electric vehicle, Powerscan E-Klasse 213 MY2021

### Nissan / Infiniti

- Added versions of missing radar calibration
- Cabstar annual model updated
- HV Battery - Hybrid and Electric Vehicles - extended diagnostic coverage

### Opel / Vauxhall

- Corsa E - Hybrid/EV-Systems
- Grandland X - Hybrid/EV-Systems
- New models - Combo Cargo, Combo Life, Mokka B, Vivaro C and Zafira Life added



# NEW AND REVISED MODELS

## WOW! 5.33.00 MILESTONE UPDATE

### Peugeot

- New models 2008 (P24), 508 II added, Hybridsystem for 508 II and 3008 (P84)
- Partner – Robotic-Gearbox
- ADAS camera calibration Partner 4

### Renault

- New engines for Kangoo and Capture
- AdBlue-Systems with extended functionality for several models
- DC4-Gearbox with functionalities for several models

### Subaru

- Electric parking brake with service function
- RH/LH Rear vehicle detection (side radar) system

### Suzuki

- New models Across and Swace

### Volkswagen AG

- ADAS functionality for several models include rear axle steering zero position
- Crafter, new engines with full functionality

### Volkswagen AG

- Golf VIII, Audi A3, Seat Leon & Skoda Octavia IV updated with multiple systems with full coverage.
- Transporter / Multivan T6.1 - new model with full functionality

### Volkswagen AG

- ID.3 - several systems with important real time data values (battery parameters)
- ID.4 - with full functionality

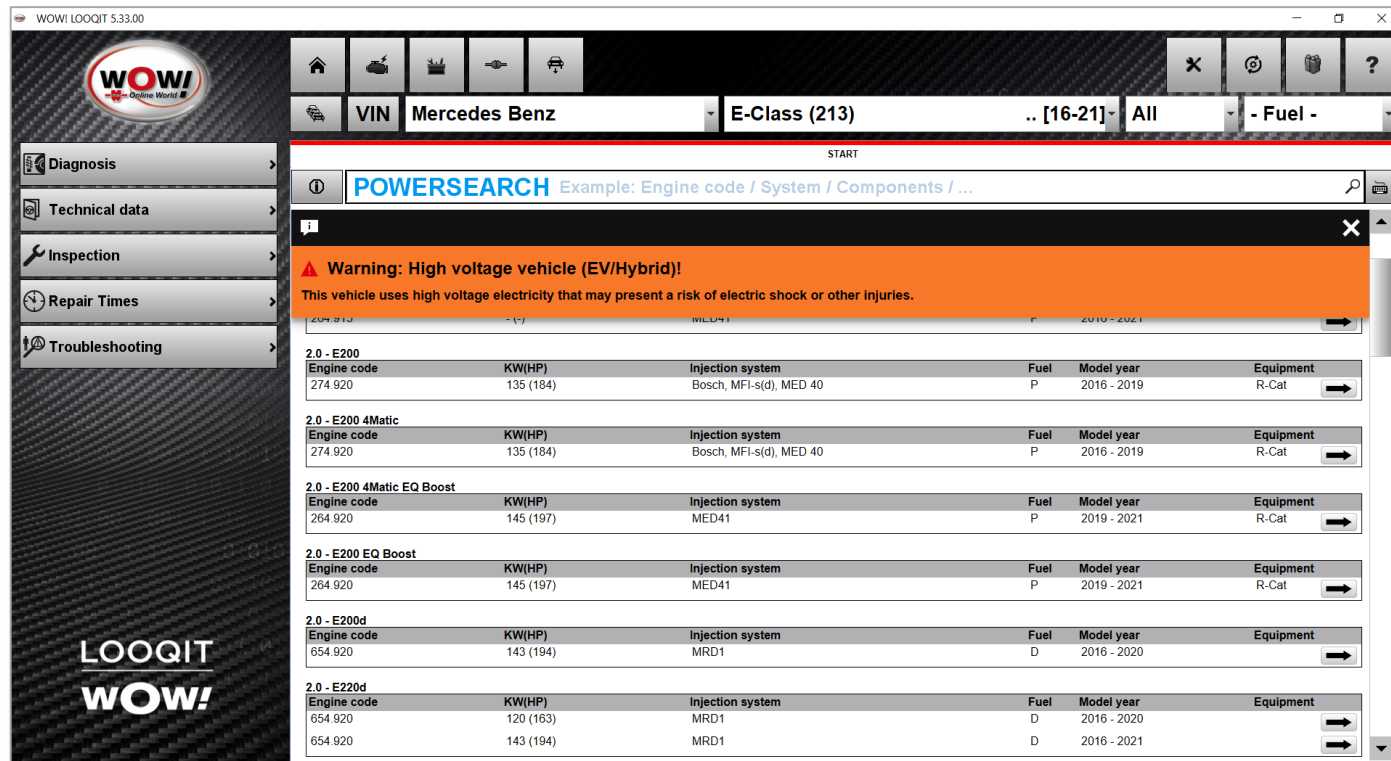
### Volvo

- XC40 BEV / XC40 P8 BEV with full functionality

# DIAGNOSIS UPDATE – IMPROVEMENTS

## WOW! 5.33.00 MILESTONE UPDATE

If a vehicle model may be equipped with high-voltage technology (EV/hybrid), a warning is displayed!  
Please observe the occupational safety measures!



The screenshot shows the WOW! LOOQIT 5.33.00 software interface. The top navigation bar includes icons for home, search, and help. The main header displays the selected vehicle: Mercedes Benz E-Class (213) with a fuel type of - Fuel -.

A search bar labeled "POWERSEARCH" is visible, with a search icon and a magnifying glass. Below the search bar, a prominent orange warning banner reads: "Warning: High voltage vehicle (EV/Hybrid)! This vehicle uses high voltage electricity that may present a risk of electric shock or other injuries."

Below the warning, a table lists engine specifications for various Mercedes-Benz E-Class (213) models. The table columns are: Engine code, KW(HP), Injection system, Fuel, Model year, and Equipment.

| Engine code                       | KW(HP)    | Injection system        | Fuel | Model year  | Equipment |
|-----------------------------------|-----------|-------------------------|------|-------------|-----------|
| <b>2.0 - E200</b>                 |           |                         |      |             |           |
| 274 920                           | 135 (184) | Bosch, MFI-s(d), MED 40 | P    | 2016 - 2019 | R-Cat     |
| <b>2.0 - E200 4Matic</b>          |           |                         |      |             |           |
| 274 920                           | 135 (184) | Bosch, MFI-s(d), MED 40 | P    | 2016 - 2019 | R-Cat     |
| <b>2.0 - E200 4Matic EQ Boost</b> |           |                         |      |             |           |
| 264 920                           | 145 (197) | MED41                   | P    | 2019 - 2021 | R-Cat     |
| <b>2.0 - E200 EQ Boost</b>        |           |                         |      |             |           |
| 264 920                           | 145 (197) | MED41                   | P    | 2019 - 2021 | R-Cat     |
| <b>2.0 - E200d</b>                |           |                         |      |             |           |
| 654 920                           | 143 (194) | MRD1                    | D    | 2016 - 2020 |           |
| <b>2.0 - E220d</b>                |           |                         |      |             |           |
| 654 920                           | 120 (163) | MRD1                    | D    | 2016 - 2020 |           |
| 654 920                           | 143 (194) | MRD1                    | D    | 2016 - 2021 |           |

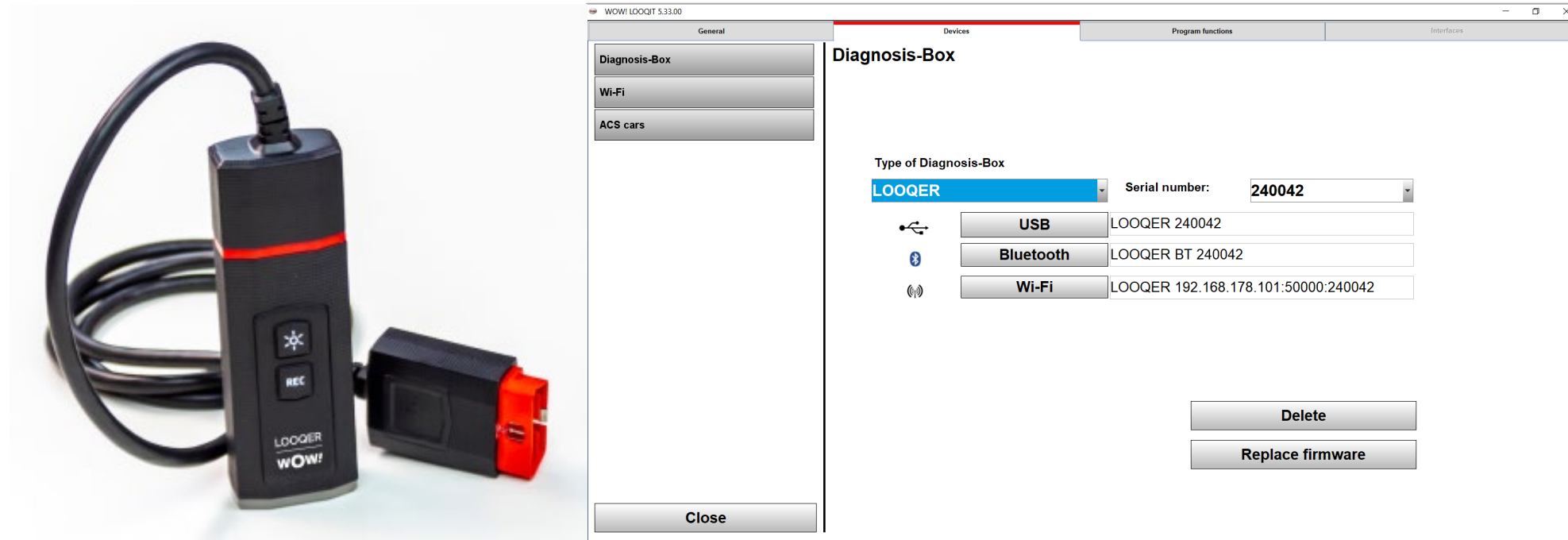
# LOOQER HARD- WARE



# WOW! LOOQER – NEW HARDWARE AVAILABLE

## WOW! 5.33.00 MILESTONE UPDATE

- The WOW! has a new, additional diagnostic interface
- As of version 5.33.00, the LOOQER is available as hardware in the WOW! LOOQIT software



Further information:  
[www.wow-portal.com/en/takealook](http://www.wow-portal.com/en/takealook)

# WOW! LOOQER – NEW HARDWARE AVAILABLE

## WOW! 5.33.00 MILESTONE UPDATE

- Vehicle communication interface for multi-brand diagnostics
- Power supply 6-36V, maximum current consumption 500mA
- Interchangeable connector plug and 1600mm long extension cable, both equipped with a white LED
- Integrated DoIP and PassThru functionality
- Flight recorder with 4GB internal memory
- Rubberized surface and meets IP44 requirements for perfect handling in everyday workshop use
- Connection via USB (C), Bluetooth, WiFi possible
- 360-degree LED light ring and acoustic signals for feedback functions



Further information:  
[www.wow-portal.com/en/takealook](http://www.wow-portal.com/en/takealook)



# WHAT ARE THE BENEFITS OF THE DIAGNOSTIC INTERFACE LOOQER?

WOW! 5.33.00 MILESTONE UPDATE

**Everything in, for today and for tomorrow**

**Looking into the future for new perspectives**

CAN FD

DoIP

Pass Thru

WiFi and Bluetooth technology

**Less on it, but more in it**

**Full functionality and the latest technology**

Small, handy, light, robust, workshop-ready

Use as you need it:  
Can be used as a small, wireless dongle or via enclosed cable

**Relevant data with the flight recorder**

**Connect, drive off, record mobile data, evaluate later**

Save pre-selected data on the internal memory during the journey without any further input device

Later analyse everything in detail with the WOW! software

Further information:  
[www.wow-portal.com/en/takealook](http://www.wow-portal.com/en/takealook)



# WOW! WÜRTH ONLINE WORLD GMBH

## WOW! Würth Online World GmbH

Schliffenstrasse 22  
74653 Künzelsau - Gaisbach  
Germany

Phone +49 7940 98188-0  
Fax +49 7940 98188-1099  
info@wow-portal.com  
www.wow-portal.com



[Website](#)

www.wow-portal.com



[YouTube](#)

@ WOW! Würth Online World GmbH



[LinkedIn](#)

@ WOW! Würth Online World GmbH



[Facebook](#)

@ WOW Würth Online World



[Instagram](#)

@ wuerthonlineworld

