



# WOW! NEWS

## UPDATE DIAGNOSTIC SOFTWARE 5.29.00

### TABLE OF CONTENTS

|  |   |
|--|---|
| NEW FEATURES AND EXTENDED DIAGNOSTIC DATA.....           | 2 |
| DATABASE COVERAGE .....                                  | 2 |
| NEW AND REVISED MODELS.....                              | 2 |
| ACS CARS – CALIBRATION OF DRIVER ASSISTANCE SYSTEMS..... | 3 |
| EXTENDED COVERAGE FOR ACS CARS .....                     | 3 |
| ELECTROMOBILITY.....                                     | 4 |
| NEW AND ADVANCED MODELS .....                            | 4 |
| SECURITY GATEWAY OF FIAT CHRYSLER AUTOMOBILES N.V.....   | 4 |
| COMPLETE DIAGNOSTICS WITH WOW AND FCA.....               | 4 |



# WOW! NEWS

Dear WOW! user,

The new WOW! 5.29.00 software version is ready for installation!

## NEW FEATURES AND EXTENDED DIAGNOSTIC DATA

Version 5.29.00 includes the following program improvements and bug fixes:

- Jaguar I-Pace – new model, all-electric vehicle, full coverage
- Land Rover Range Rover Evoque – DoIP – new model 2020, full coverage
- Jaguar and Land Rover models – dynamic camera calibration added
- Seat Tarraco – new model with full coverage
- Audi Q3 19 – new model with full coverage
- Mazda CX 5 (KF) (2017-) – new model with full coverage
- Mazda camera calibration (TFC9-L, TFC9-R) for CX5 and 3 models
- Ford – camera calibration (dynamic) for several models
- Mercedes EQC – new model (all-electric) with full coverage
- Mercedes GLA – new model with diagnostics for engines
- Mercedes eVito – new model with full coverage
- Opel Astra K, Corsa E, Vivaro B model year update up to 2019
- Opel – camera calibration (TFC5) for Combo E, Crossland X, Grandland X

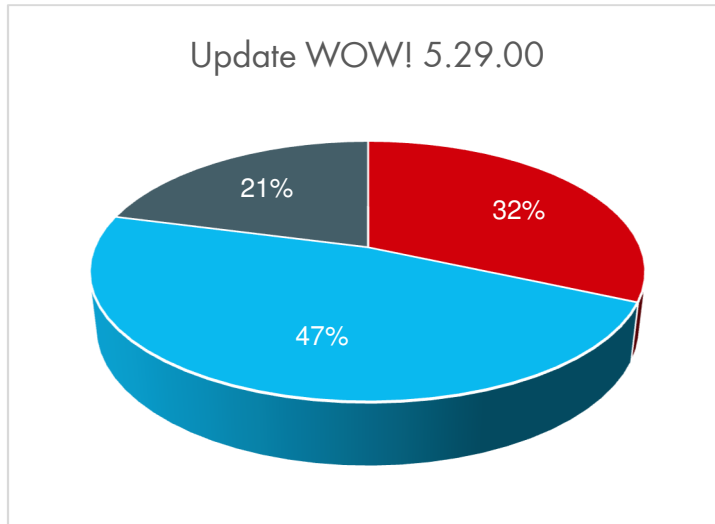
## DATABASE COVERAGE

With the WOW! 5.29.00 software version we support 70 manufacturers, 1446 vehicle models with more than 12,470 different engines. This is an increase of 1.12% compared to the previous version.

## NEW AND REVISED MODELS

- Jaguar I-Pace
- Land Rover Discovery 5 [17-DoIP] and Range Rover Evoque [19-DoIP]
- Lexus GS series [11-15], GS series [15-], LS series [17-], RX series [15-]
- Mercedes EQC [N293], GLA Class [H247], GLC Class [X253] [2020-]
- Renault Koleos II/QM6
- Toyota Corolla [06-13], Corolla [12-18], Land Cruiser Prado J120 [02-09], Land Cruiser Prado J150 [09-], Verso S [10-17]

# WOW! NEWS



You don't (currently) need the "new" models? We also keep an eye on the "old" ones!

Also with 5.29.00, the focus of further development is on the "older" vehicle models. Around 68% of all the newly developed diagnostic functions relate to vehicles that are 4 years old or more.

0-3 years

4-10 years

11-28 years

## ACS CARS – CALIBRATION OF DRIVER ASSISTANCE SYSTEMS

ACS cars from WOW! Würth Online World offers you a flexible and cost-effective system for the calibration of all relevant vehicle brands consisting of hardware and software. The system can be expanded at any time with double-sided, brand-specific calibration boards or the radar accessories. It can be combined individually and cost-effectively and is an indispensable aid in everyday workshop activities.

### EXTENDED COVERAGE FOR ACS CARS

- Database extension for camera calibration for models from Audi, BMW, Ford, Honda, Jaguar, Land Rover, Mazda, Mercedes, Opel, Renault, Seat, Toyota, Vauxhall, Volkswagen, Volvo
- New radar calibration for models from Audi, BMW, Mercedes, Peugeot, Renault, Seat

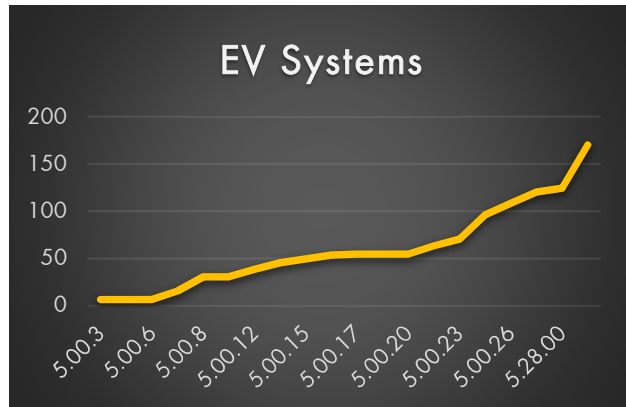
A detailed list of the vehicles covered will be available shortly on our homepage.

[www.wow-portal.com/acs-cars](http://www.wow-portal.com/acs-cars)

# WOW! NEWS

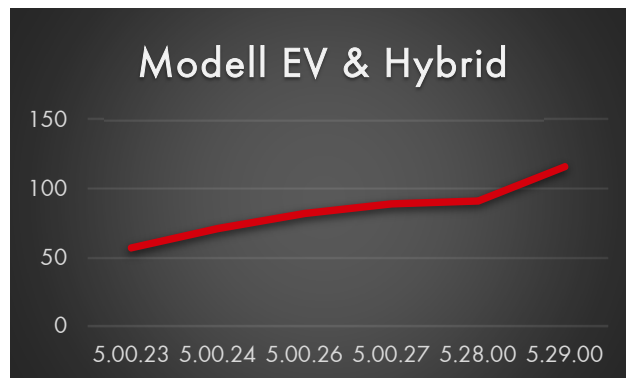
## ELECTROMOBILITY

### NEW AND ADVANCED MODELS



Everyone is talking about "electric mobility". For the last 7 years (5.00.3, 2013), WOW! has been investing a lot of attention and development work in this topic. As things stand today, more than 170 different high-voltage systems can be diagnosed!

Work has continued on the model coverage. With the Jaguar I-Pace and the Mercedes EQC, only the currently available all-electric models should be mentioned here as examples. Since no manufacturer is currently launching its models on the market without hybrid capability, it is difficult to provide examples here as there are so many.



Please always think of your personal safety when handling high-voltage systems. For this purpose, the Würth Academy offers the course "Seminar for skilled persons working on high-voltage systems in a de-energised state".

## SECURITY GATEWAY OF FIAT CHRYSLER AUTOMOBILES N.V.

### COMPLETE DIAGNOSTICS WITH WOW AND FCA

Fiat Chrysler Automobiles N.V. (FCA) started to implement the Security Gateway (SGW) control unit in various vehicles in model year 2018. We have examined the background to this several times in previous Info bulletins. Further information can also be found on our website at [www.wow-portal.com](http://www.wow-portal.com)

In order to clear fault codes, activate components or enable adjustment functions such as the resetting of service lights, you must purchase a "certificate" from FCA. For this, you need to register with FCA and be connected to the internet during diagnosis.

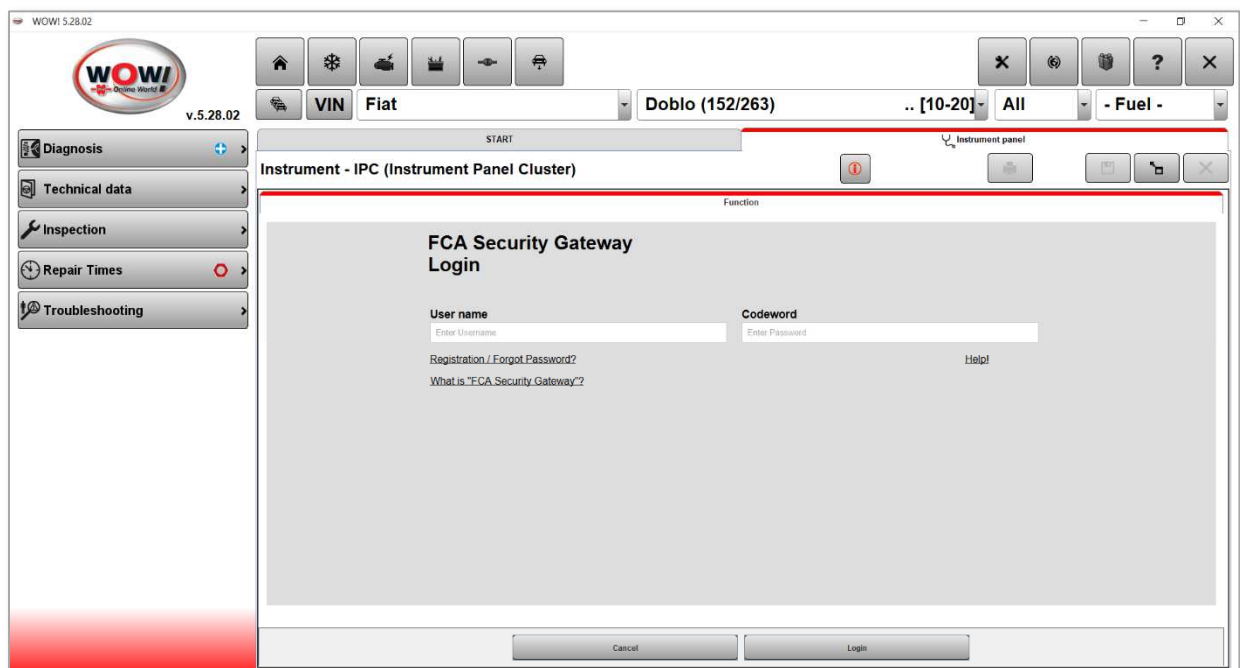
# WOW! NEWS

Vehicles affected (as of March 2020)

- Alfa Romeo: Giulia; Stelvio
- Chrysler: 300 (from MY18); Pacifica (from MY18)
- Dodge: Challenger (from MY18); Charger (from MY18); Durango (from MY18)
- Fiat: 500L (from MY17); 500X (from MY19)
- Fiat Professional: Doblò (from MY19)
- Jeep: Cherokee (from MY19); Grand Cherokee (from MY18); Grand Commander (from MY19); Renegade (from MY19); Wrangler (from MY18)
- RAM: 1500 Pick-up (from MY18); Promaster City (from MY18)

The program forwards vehicle information and user data to FCA. Once the data has been checked and a valid certificate obtained, the connection to the vehicle systems is established. This process is carried out in the background. The user only has to enter their account details (user name/password).

The connection dialogue to FCA appears automatically as soon as an SGW is detected in the vehicle. In this dialogue box you will find both the link to the FCA homepage and a help file explaining how to create a user account with FCA and how to obtain a certificate. The use of the FCA SGW module is linked to a valid software licence.



The use of the diagnostic solution in conjunction with the WOW! Emission software is currently not yet possible. The necessary adaptations are currently under development at Fiat Chrysler. Due to the current situation - especially in Italy - it is not yet possible to make a precise statement regarding the final implementation in the WOW! diagnostic software. Please contact your WOW partner in case of need. Please do not hesitate to contact us if you have any questions.

We hope you enjoy working with the WOW! Software and the WOW! 5.29.00 update and we wish you a relaxed working day.

Your WOW! team